



# Medical Gas Systems & Devices Overview

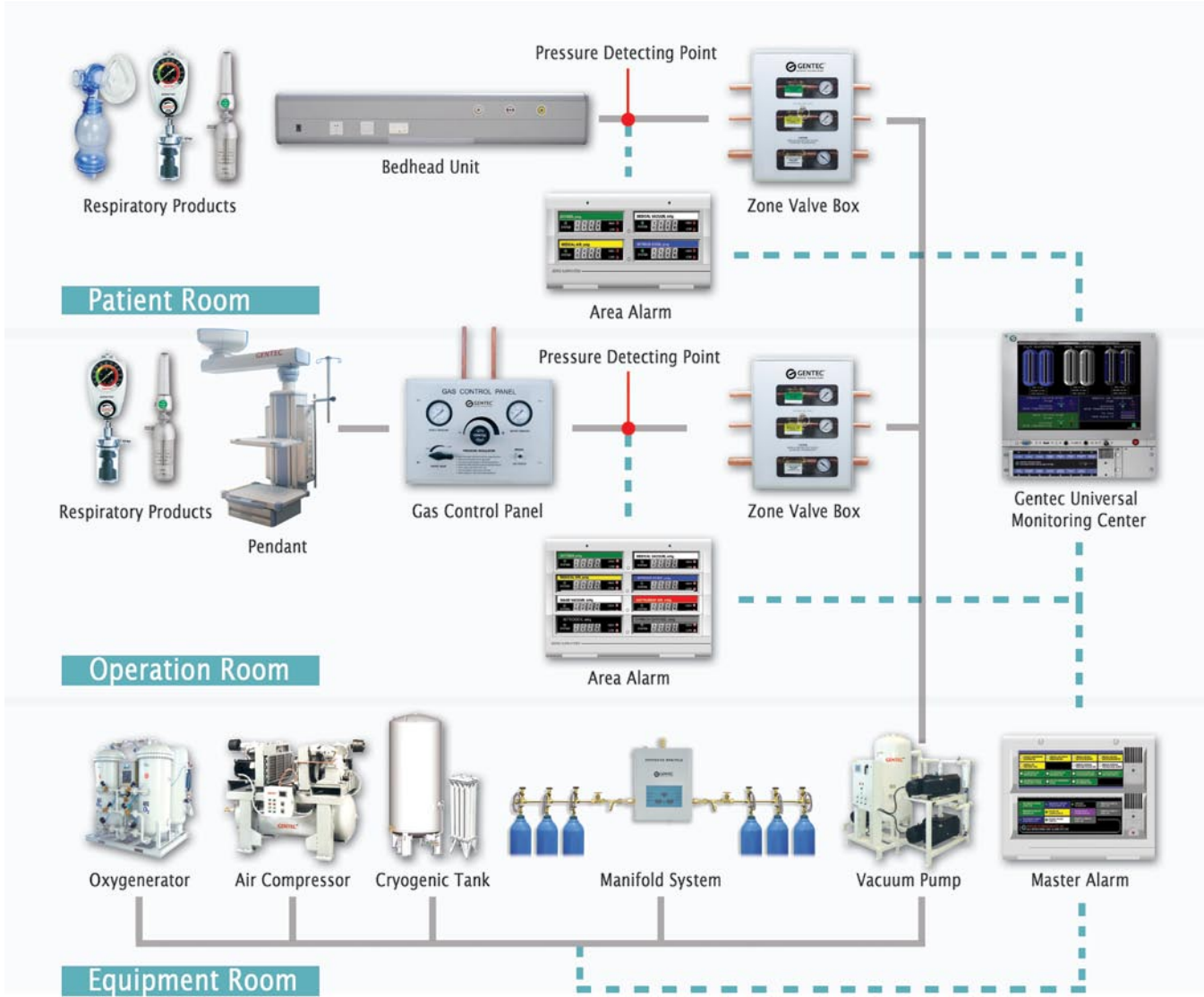
*Technology for a Better Future*



# GAS FLOW CONTROL SOLUTIONS



# MEDICAL GAS FLOW SOLUTIONS







### Art Wall Enclosure

- Designed for hospital rooms where design is emphasized, replaces traditional bedhead units
- The painting sits on a sliding mechanism which can hide the medical equipments while they are not in use
- The art piece and exterior design can be customized to meet or match a variety of design requirements
- A wide range of medical products & accessories can be custom-ordered
- Gas and electrical channels are insulated to ensure safety







GENTEC® Medical Gas Outlets shall be UL Listed, cleaned for medical gas service, and compliant with the latest edition of NFPA 99. They shall accept only corresponding Ohmeda®, DISS, Chemetron®, or Puritan Bennett® style quick connect adapters. Outlets are designed with an universal rough-in assembly for interchangeability on different quick connects without removing the entire outlet. For outlets providing positive pressure gas, they shall have a primary and a secondary check valve, where the secondary check valve allows for servicing without isolating an entire zone.

#### Latch Valve Assembly (front)

The latch-valve assembly shall have gas specific index corresponding to the gas service on the rough-in assembly to prevent interchanging of gas service. Each latch-valve assembly shall be color coded for its specified gas service.

#### Rough-In Assembly (back)

The rough-in assembly shall be manufactured using (1/2" outside diameter) type "K" copper tubing, silverbrazed to the outlet body. The tubing allows 360 degree swivel on the outlet body for easy installation. Rough-in assembly is manufactured to accept only the specified gas service by use of indexes.



#### American/ French /Australian Standard Medical Gas Outlets

- Accepts only Ohmeda, DISS, Chemetron, or Puritan Bennett style gas specific adapters
- Unique pin index for gases to prevent interchanging of gas service
- Universal rough-in assembly
- Color-coded for easy gas identification
- 360° swivel on the inlet pipe for easy installation
- 100% tested and individually packaged
- UL listed and complies with the latest edition of NFPA 99: 2005
- French Standard is UL listed, NF EN 737-1 compliant
- Australian Standard complies with NF EN 737-1 and AS 2896-1998





## German/British/Japanese Standard Medical Gas Outlets

- Color-coded for easy gas identification according to ISO 32
- Pressure lid can be disassembled during maintenance
- Multiple assembly methods
- With inspection valve, easy to maintain
- 100% tested for gas leakage
- German Standard is CE listed and compliant with EN 737-1 and DIN 13620-2
- British Standard is CE listed and compliant with HTM 02-01, EN 737-1 and BS 5682-1998
- Japanese Standard is compliant with JIST 7101





- GENTEC® Anaesthetic Gas Scavenging System is used for the safe removal of excess anaesthetic gas and anaesthetic vapors
- Complies with EN 737-2, EN 737-4 (TYPE 1)
- Color-coded for easy gas service identification according to ISO 32
- Flow: 25~50 l/min (Pressure drop: 0.15~0.29 psi)
- Air driving flow : 10~15 l/min (Pressure: 58 psi)
- 15 mm piping
- 100% tested and individually packaged



Genstar Technologies Company Inc.  
4525 Edison Avenue, Chino, CA 91710, USA  
Tel: 909-606-2726  
Fax: 909-606-6485  
[www.gentechealthcare.com](http://www.gentechealthcare.com)

