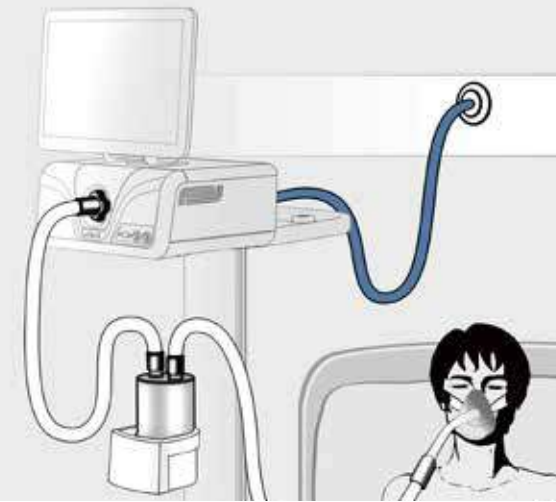


# VG 55 Ventilator

## High-Flow Therapy (HFT)

- An air/oxygen blender, allowing for 21% to 100% FiO<sub>2</sub>, generates up to 60L/min flow. HFT has been approved as an effective in the treatment of acute respiratory failure. Since 2011, the application of HFT has been increasing high in clinical field.



## Complete Ventilation Modes for Clinicians

- Volume Guaranteed Pressure Support Ventilation (VGPS) assures tidal volume with auto adjusting pressure support, decreasing the workload for clinicians while ensuring patient safety.
- CPAP with Crelied option offers two levels of flow-based expiratory pressure relief, which improves patient comfort and treatment acceptance.



## VG 55 Ventilator

**HEYER**

ADD.: Carl-Heyer-Str. 1/3 | 56130 Bad Ems / Germany  
Fon: +492603 791 148  
Fax: +492603 791 211  
MAIL: info@heyermed.de  
www.heyermedical.de

AVT55-1912

CE 0123

**HEYER**

# VG 55 Ventilator



## Start Your Natural Breath with VG55

VG55 is specially designed for Non-Invasive Ventilation (NIV). Research has shown that early application of NIV can effectively decrease intubation rates and hospitalization length. The application of NIV can also prevent ventilator associated pneumonia (VAP), as well as promote respiratory care. VG55 adopts advanced turbine technology; provides NIV with ICU-grade monitoring.



**15** Seconds

### Start Your Natural Breath within 15 Seconds

- Auto-calibration is performed within 15 seconds, safely guaranteeing the ventilator's performance.
- Quick setup with guide-way system and intuitive interface.
- Smart trigger combines pressure and flow triggers, highly improving the patient-machine synchrony, allowing the patient to breathe in a more natural manner.

**5** Minutes

### Become a Respiratory Therapist in 5 Minutes

- With 15.6" intelligent touchscreen, the VG55 displays complete ventilation monitoring in a single screen.
- Simplifies the patient management with user-friendly interface and guide-way information.
- Brief explanations of all included ventilation modes provide a clear clinical reference for treatment options.

**in** Seconds

### Get What You Need in Seconds

- Two minutes of emergency oxygen therapy provides 100% oxygen for whenever and wherever needed.
- Extended SpO<sub>2</sub>, PR and EtCO<sub>2</sub> module fulfill clinical requirements.
- Advanced integrated Aerogen nebulizer enhances respiratory care.
- High-Flow Therapy up to 60L/min.

Standby mode for patient-clinician interaction

Various information interfaces: USB, VGA, Nurse Call, Wifi & Bluetooth

Smart trigger and cycling ensures patient-machine synchrony

Alarm reset helps maximize patient safety while reducing excessive alarms