



EcoStar™ Info
&
EcoStar™ Auto

EcoStar™ Info & Auto :

Two new economical, high-performance Positive Pressure devices.



EcoStar™ Info & Auto are Positive Pressure devices with a large range of features to improve the comfort and treatment compliance of patients suffering from Obstructive Sleep Apnea Syndrome (OSAS).

These devices adapt easily to the user's daily routine, and guarantee high-performance, comfort and ease of use.

With their exceptionally light weight (750 g), compactness and universal power adapter, **EcoStar™ Info & Auto** optimise user comfort, without requiring special adjustments, at home or on the move.



The **EcoStar™ Info & Auto** are designed to be compatible with the humidifier **GoodKnight® H₂O** when the patient's treatment includes heated humidification.

The air inlet filter is highly accessible, making it easy for the user to independently perform routine maintenance on the device.

EcoStar™ Info & Auto detect inspiratory flow limitation, snoring and residual apneas and hypopneas. Efficacy data on leaks and usage is saved for one year in the device's memory, along with the real patient flow over the last 16 hours of use.

EcoStar™ Auto, Simple and practical automated solution

Auto-CPAP Mode

The **EcoStar™ Auto** algorithm responds to moderate obstructive events such as inspiratory flow limitation and snoring. The differentiation between obstructive and central events allows the device to deliver the optimum pressure at anytime, only increasing the pressure in case of apneas or hypopneas identified as obstructive by the algorithm.

EcoStar™ Info & Auto : Common features



Disconnected mask function

If the mask is removed by the patient, the pressure is reduced to the minimum level in a few seconds. The device stops after 30 minutes, without resuming treatment.

Auto ON function

The patient starts his/her treatment either by breathing in the mask or by pressing the on/off button.

Calibration Comfort (CC+) function

This function improves the respiratory comfort of the patient during treatment in PPC and Auto-PPC mode. It adapts the supplied pressure to the patient's respiratory cycle without compromising the effectiveness of the treatment.

This technology allows the pressure to be increased on inhalation and decreased on exhalation; these variations adapt to the patient's natural respiratory cycles.

Specific auto-calibration function

This function delivers the prescribed pressure to the patient interface, whatever the configuration of the air pathway to the interface (type of mask, diameter and length of tube, humidifier or not).

Ramp function

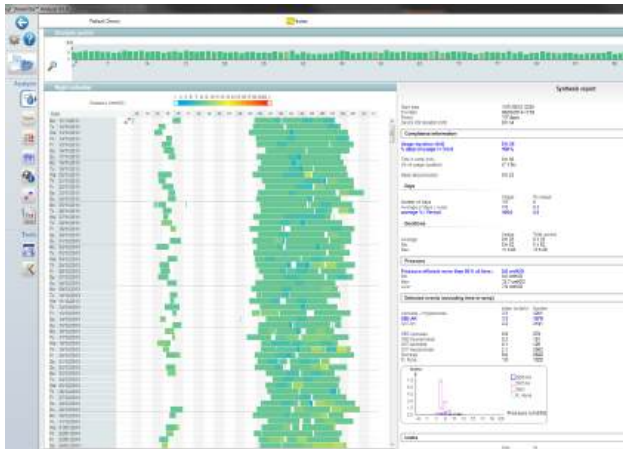
This helps the patient to fall asleep with a reduced pressure, called the comfort pressure. After a pre-set ramp time, the device delivers the prescribed pressure in PPC mode or activates the pressure increase and decrease commands in the Auto-CPAP mode.

Data management

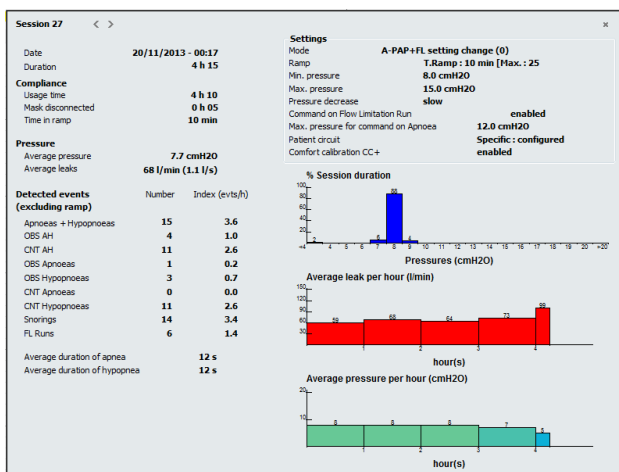
DREAMSTAR™ ANALYZE 4.0

DreamStar™ Analyze 4.0 is the latest generation of software dedicated to the SEFAM range of positive pressure devices.

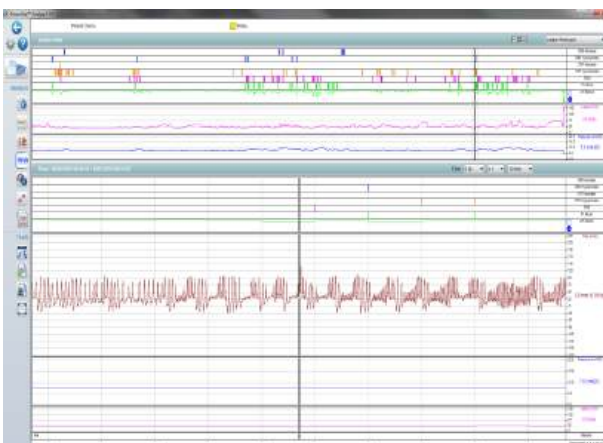
It is now possible to retrieve detailed data for up to 365 days, saved in the device memory. This data is presented in the form of summary reports or graphs for simple and complete assessment of treatment efficacy. DreamStar™ Analyze 4.0 offers direct connection with real-time display.



Night calendar



Details of a session



Flow curves



CUSTOMER SERVICE

TEL : +33 (0) 3 83 44 77 40

FAX : +33 (0) 3 83 44 99 87

customerservice@sefam-medical.com



TECHNICAL SERVICE

TEL : +33 (0) 3 83 44 85 23

FAX : 0+33 (0) 3 83 44 99 88

technicalservice@sefam-medical.com



MARKETING

Tel: +33 (0) 3 83 44 85 04

Fax: +33 (0) 3 83 44 85 01

marketing@sefam-medical.com

Masks, Products & Accessories

Masks

| | |
|-------------------|-------------|
| Breeze Nasal (S) | M-268020-10 |
| Breeze Nasal (M) | M-268030-10 |
| Breeze Nasal (L) | M-268040-10 |
| | |
| Breeze Nasal+ (S) | M-268020-11 |
| Breeze Nasal+ (M) | M-268030-11 |
| Breeze Nasal+ (L) | M-268040-11 |

References

Masks

| | |
|--------------------------|-------------|
| Breeze Nasal Comfort (S) | M-268020-12 |
| Breeze Nasal Comfort (M) | M-268030-12 |
| Breeze Nasal Comfort (L) | M-268040-12 |
| | |
| Breeze Facial+ (S) | M-268020-20 |
| Breeze Facial + (M) | M-268030-20 |
| Breeze Facial+ (L) | M-268040-20 |

References

| | |
|---------------------------|-------------|
| Breeze Facial Comfort (S) | M-268020-21 |
| Breeze Facial Comfort (M) | M-268030-21 |
| Breeze Facial Comfort (L) | M-268040-21 |



Products & Accessories

| | |
|---|----------------------------------|
| EcoStar™ Auto (includes 1.80 m patient tube and carrying case) | M-115902 |
| EcoStar™ Info (includes 1.80 m patient tube and carrying case) | M-115901 |
| GoodKnight® H ₂ O | M-114600 |
| GK® H ₂ O reservoir kit | M-314600-11 |
| H ₂ O reservoir removal tool | M-414600-12 |
| H ₂ O silicone gasket | M-414600-15 |
| 50 EcoStar™ air inlet filters | M-315940-01 |
| GK® 420 EU™ power supply | M-413910-00 (TPI GTSA-130180WV2) |
| Export EcoStar power supply | M-415910-03 (PW-M024A-1Y120K) |
| EcoStar™ carrying case | M-214531-01 |
| Cigar. Lighter cable GK420/EcoStar™ | M-213930-03 |
| Battery cable ring term GK420/EcoStar™ | M-213930-02 |
| Patient circuit 1,80m Ø 22mm | M-261000-04 |
| Patient circuit 1,80m Ø 15mm | M-261000-00 |

References



CUSTOMER SERVICE

TEL : +33 (0) 3 83 44 77 40

FAX : +33 (0) 3 83 44 99 87

customerservice@sefam-medical.com



TECHNICAL SERVICE

TEL :+33 (0) 3 83 44 85 23

FAX : 0+33 (0) 3 83 44 99 88

technicalservice@sefam-medical.com



MARKETING

Tel: +33 (0) 3 83 44 85 04

Fax: +33 (0) 3 83 44 85 01

marketing@sefam-medical.com

SPECIFICATIONS :

Characteristics :

Operational modes : EcoStar™ Info : CPAP
EcoStar™ Auto : CPAP, Auto-CPAP

Pressures delivered : 4–20 cm H₂O (± 0.5 cm H₂O), adjustable in steps of 0.5cm H₂O.

Max. flow rate for a pressure drop of 1 cm H₂O at patient inlet:
150 l/min at 20 cm H₂O without humidifier.

Ramp time : 0–45 minutes, adjustable in 5 minutes steps.

Noise level : 27,5 dBA measured with a tolerance of 3 dBA according to NF EN ISO 17510-1:2009.

Physical Characteristics :

Size : Width 14 cm × length 20 cm × height 8 cm.

Weight : 0.750 kg without power supply.

Electrical characteristics :

Electrical supply : Input range 100–240V (50–60 Hz).

Maximum electrical power : 25 W (without humidifier).

93/42/EC classification : Class IIa.

Environmental requirements :

Temperature : +5 °C to +40 °C
+5 °C to +35 °C with humidifier.

Humidity : 10–95% relative humidity without condensation.

Storage : –20 °C to +60 °C, ≤ 95% relative humidity without condensation.

Altitude : From sea level to 2400 metres.



CUSTOMER SERVICE

TEL : +33 (0)3 83 44 77 40

FAX : +33 (0)3 83 44 99 87

customerservice@sefam-medical.com

